

# MONTHLY MEMBERSHIP PROGRESS REPORT

District 322 B1

Results as of: 3/31/2020

GMT:

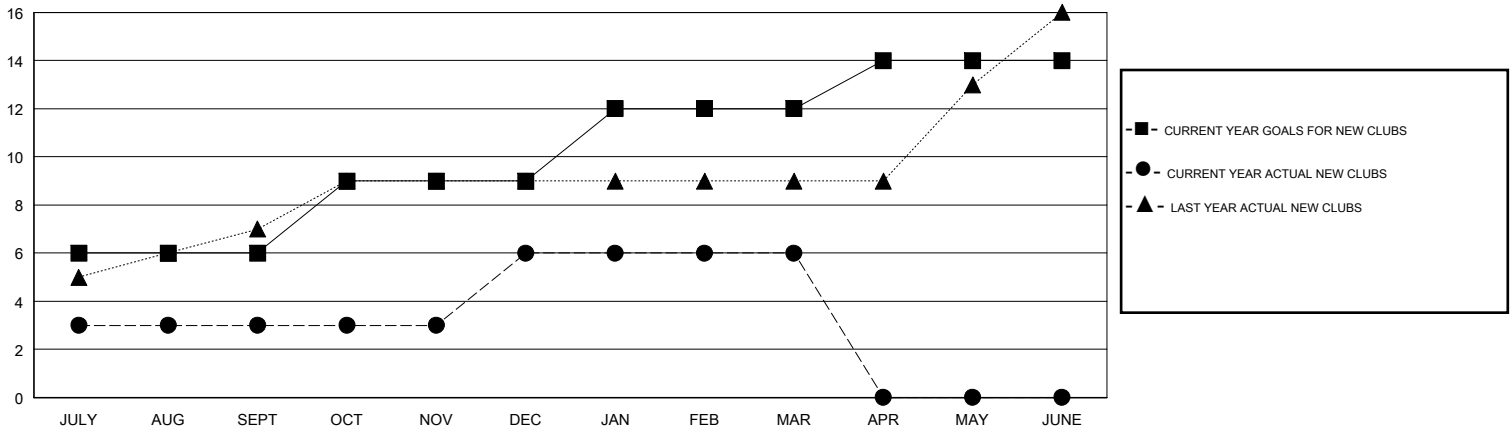
LOCATION INDIA

GMT CA

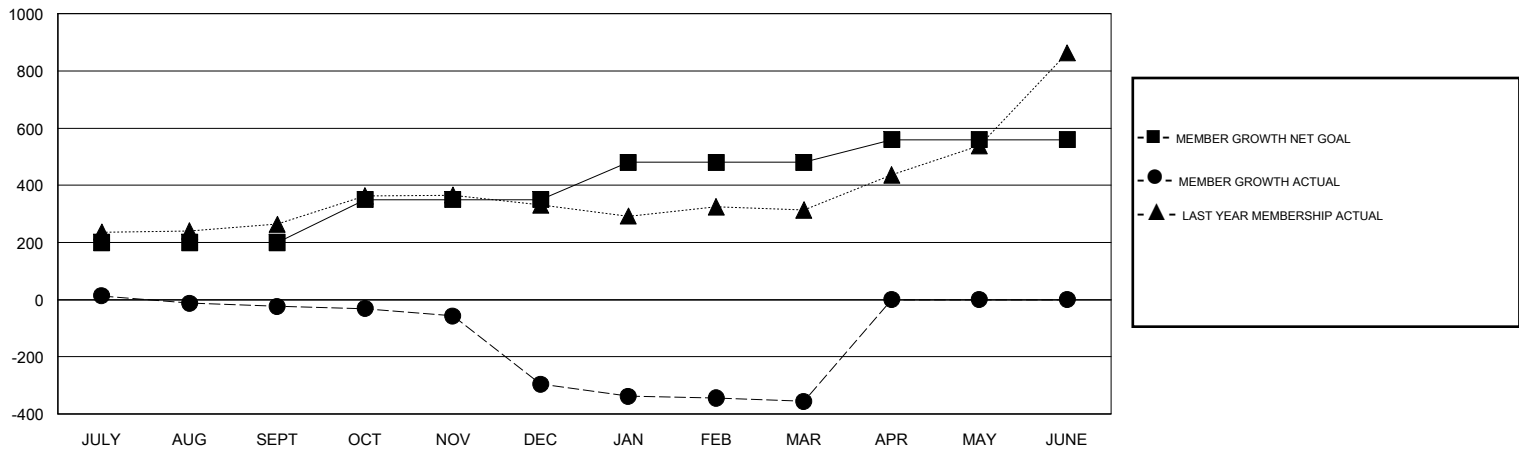
Clubs			
RESULTS FOR 2019-2020			
QUARTER	NEW CLUB GOAL	NEW CLUBS	DROPPED CLUBS
JULY/AUG/SEPT	6	3	1
OCT/NOV/DEC	3	3	6
JAN/FEB/MAR	3	0	2
APR/MAY/JUNE	2	0	0

Members			
RESULTS FOR 2019-2020			
QUARTER	MEMBER GROWTH NET GOAL	MEMBER GROWTH ACTUAL	DROPPED MEMBERS ACTUAL (including transfers)
JULY/AUG/SEPT	200	120	124
OCT/NOV/DEC	150	154	424
JAN/FEB/MAR	130	22	80
APR/MAY/JUNE	80	0	0

GOALS AND ACTUAL NEW CLUBS CUMULATIVE



GOALS AND ACTUAL MEMBERS CUMULATIVE



DROPPED CLUBS: 9	33 CLUBS OF 85 ADDED 1 OR MORE NEW MEMBERS	<b>GENDER DISTRIBUTION</b> MALE 2,403 (65.87%) FEMALE 1,245 (34.13%)
<b>DROPPED MEMBERS</b> DECEASED 5 CLUB CANCELLED 203 OTHER 419 <hr/> TOTAL 627	<a href="#">CLICK HERE FOR CUMULATIVE MEMBERSHIP DATA</a>	TOTAL FAMILY UNIT MEMBERS 1,807 FAMILY MEMBERS PAYING HALF DUES 1,072